

Weekly Round Up

King Edward Primary
and Nursery School



Inspiring hearts,
shaping minds

St Andrew Street,
Littleworth,
Mansfield,
Nottinghamshire,
NG18 2RG

26th January 2026

email and phone:
office7@kingedward.notts.sch.uk
01623 472215

Headteacher's message

We've had a busy and productive week in school!

On Monday, we welcomed our governors into school to see learning in action. They spent time in classrooms talking to children and staff about what they are learning. It was a great opportunity to showcase the hard work taking place every day across the school.

We also completed an invacuation practice this week (getting inside safely), which is part of our ongoing work to keep children safe and prepared for different situations. The children were calm, sensible and followed instructions well and we were really proud of how they responded.

Year 6 enjoyed their trip to Wollaton Hall on Wednesday, linking their learning to real life experiences and deepening their understanding of their topic. Thank you to the staff who made this possible.

Across the school, we have continued to focus on:
Whole body listening
Handwriting and presentation

These are simple but important habits that really support children's learning and independence.

Thank you, as always, for your continued support. Have a lovely weekend.- Mrs Estell

Dinner Menu

Next week the dinner menu is Week 2.



Coming Up

Week commencing 9th February

Parents Evening Week- book appointment via Arbor parent app

10th February 2026

Safer Internet Day

13th February 2026

INSET DAY- School closed to all pupils

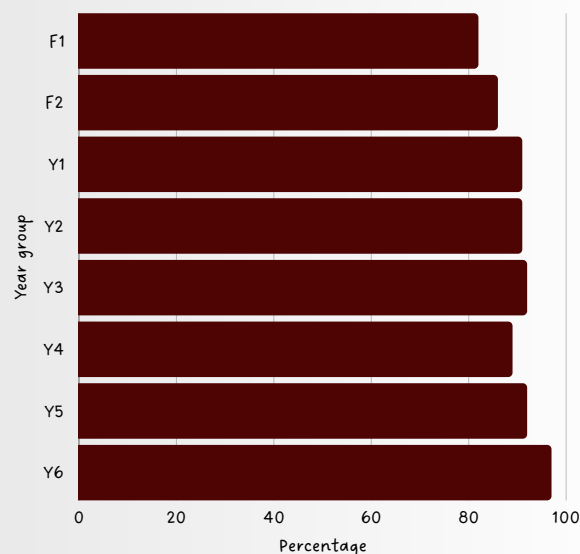
16th February 2026

Half term week



Weekly attendance : 94%

Target = 97%



This Week's Superstars

Seedlings



Saplings



Acorns



Willow



Maple



Birch



Ash



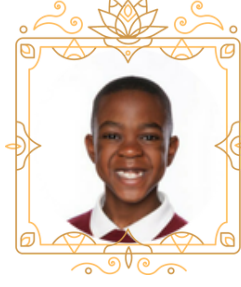
Elm



Sycamore



Palm



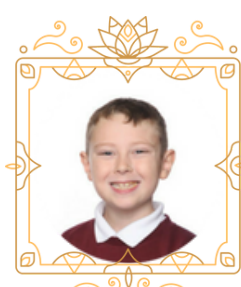
Kapok



Cedar



Banyan



Oak



Pine





staff shout out!



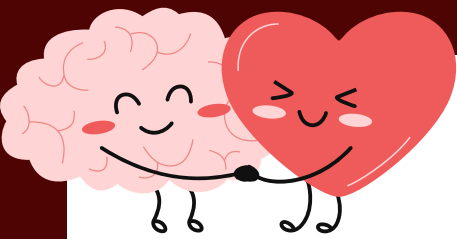
Mrs Hayes



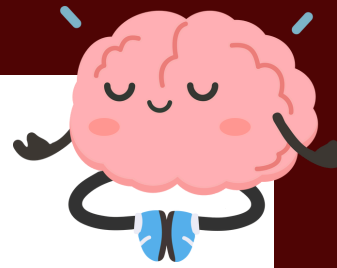
A huge thank you to Nicole, our Senior Midday Supervisor, leader of the Play Team, and a key part of our office team. Nicole plays such an important role in keeping our school running smoothly, from supporting children at lunchtime, to leading high quality play opportunities, and helping families and staff through her work in the office.

Her calm, caring approach makes a real difference every single day. We are very lucky to have her as part of the KEPS team!

thank
★ you ★



Children's Mental Health Week



Monday 9th - Friday 13th February

This year the theme is 'This is my place!' which works well with our 'community' theme and having a sense of belonging at KEPS.

That means feeling like you're part of something, such as your family, your school, your group of friends or a team. These happy moments help us feel connected, valued, and accepted. When we feel like we belong, we feel happy, safe, and ready to learn and play. It helps us grow strong in our minds and bodies, and it makes it easier to make friends, do well in school, and feel good about ourselves.

During Children's Mental Health Week, we'll be talking about how we can help everyone feel like they belong. We will share This is my Place so we can learn from each other what makes us feel happy. We'll learn how to be kind, include others, and make sure no one feels left out. Because everyone deserves to feel like they have a place where they are accepted, cared for, and loved.

As well as doing activities at school, we are asking the children to come in non school uniform with the theme 'Express Yourself!' on Thursday 12th February.

We will have buckets on the playground to collect money for the wonderful children's mental health charity called Place2Be.

As always, please speak to a member of staff if you ever have any concerns about your child's mental health.

Mrs Biston



Exciting News



Baby news! Mrs Germaney's bundle of joy has arrived! Congratulations to her and Mr G as they welcomed Molly Lynne Germaney on Friday 23rd January at 7:41 in the morning weighing 7lbs. What lovely news!

RSHE letter to parents



King Edward Primary School
St Andrew Street, Littleworth
Mansfield, Nottinghamshire, NG18 2RG

Headteacher: Mrs Emma Estell

30th January 2026

Dear Families,

From the 2nd of February 2026 we will be consulting on our updated Relationships, Sex and Health Education (RSHE) programme and policy. The DfE expects schools to be open with parents about RHSE and to consult on anything that will be taught as sex education.

You can view the draft policy, and a year by year summary on our website. [King Edward Primary School and Nursery - RSHE](#) In addition you will be able to look at sample lesson materials on request or at the meeting detailed below.

Please complete this short survey by 9th March 2026. We are holding a parents' information meeting on 16th March 2026, which you are welcome to attend. Please indicate on the survey if you will come to the meeting. For anyone who cannot attend, we will provide printed copies on request.

If, after reading the materials, you wish for your child to be withdrawn from sex education, please put this in writing to the Head teacher. (Note: parents can request withdrawal from sex education in primary school; parents do not have the right to withdraw children from relationships or health education or from science lessons.) If you would like the policy in another language or need support to review the materials, contact our school office.

Parents do have the right withdraw their children from part of the RSE programme that is outside the compulsory elements in the RSE curriculum (sex education). At King Edward Primary, this applies to two lessons taught in Year 6. Parents wishing to exercise this right are invited to contact class teachers who will discuss their concerns and the possible impact that withdrawal may have on the pupil.

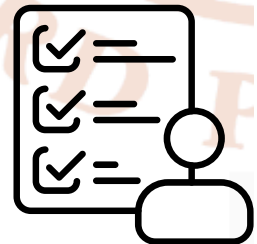
We really appreciate your help with this matter,

Kind regards

Mrs Estell
Head teacher

Mrs Creak
RSHE lead

Link to survey -->



01623 472215

office7@kingedward.notts.sch.uk

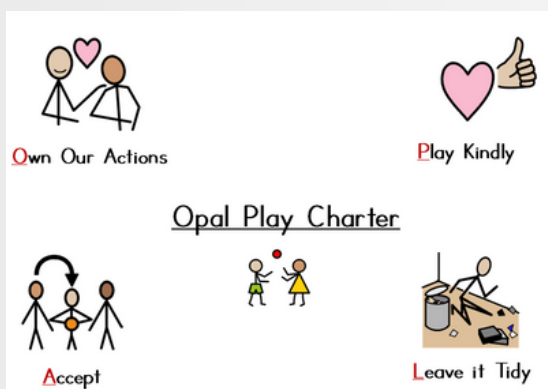
www.kingedwardprimary.co.uk

FEBRUARY 2026

| SUN | MON | TUE | WED | THU | FRI | SAT |
|-----|----------------------------------|-----------------------------|---|-----|-----------------|-----|
| 1 | 2 | 3 | 4 | 5 | 6 | 7 |
| 8 | 9 Parents Evening Week | 10 Safer Internet Day | 11 Weights and Measures f2- Y6 | 12 | 13 INSET DAY | 14 |
| 15 | 16 HALF TERM | 17 | 18 | 19 | 20 | 21 |
| 22 | 23 Y4 Residential Mon- Wed | 24 | 25 | 26 | 27 | 28 |
| 1 | 2 | 3 | 4 | 5 | 6 | 7 |

OPAL PLAY CHARTER

NOTICE



We want to let you know that cases of head lice have been identified at school again.

Please check your child's hair and scalp and treat if needed. Early detection helps prevent further spread.

Thank you for your cooperation and support.

Community links



Mental Health Support



Adult Learning



Home Learning



Translator

5C Focus and Tweak of the Week

Tweak of the Week!

Be a Whole Body Listener

Brain thinking
Ears hearing
Eyes looking
Mouth quiet
Shoulders facing
Hands still
Feet calm

5C's Focus

KEPS
Inspiring hearts,
shaping minds

Confidence