

Weekly Round Up



King Edward Primary
and Nursery School

St Andrew Street,
Littleworth,
Mansfield,
Nottinghamshire,
NG18 2RG

3rd November 2025

email and phone:
office7@kingedward.notts.sch.uk
01623 472215

Headteacher's message

Welcome back! We hope everyone had a lovely half term break. It's been a busy and positive start to the second half of the autumn term at King Edward.

Our Tweak of the Week focused on following instructions first time, helping children to settle quickly and keep learning time calm and purposeful. In assembly, we explored the 5C of Courage, with pupils sharing fantastic examples of how they show bravery both in and out of the classroom.

The Book Fair opened this week and was a great success. Thank you to everyone who came along and supported it.

Teachers met with families for Parent/Carer Meetings, which were really valuable opportunities to talk about how children are progressing and how we can continue to work together this term. Thank you for taking the time to come in and meet with staff.

We also had some exciting educational visits: Year 6 visited the National Holocaust Centre, where they learned about remembrance and resilience. Year 5 enjoyed their trip to Mansfield Museum, linking to their current history topic.

It's been a full but productive week. Well done to all our children for starting the half term so positively, it was lovely to see them all!

Have a great weekend everyone!
Mrs Estell

Dinner Menu

Next week the
dinner menu is
Week 2.



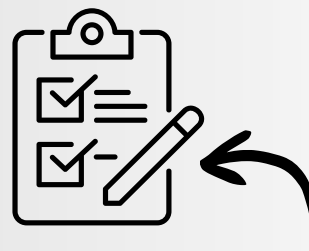
Coming Up

10th November 2025

Odd socks day

10th November 2025

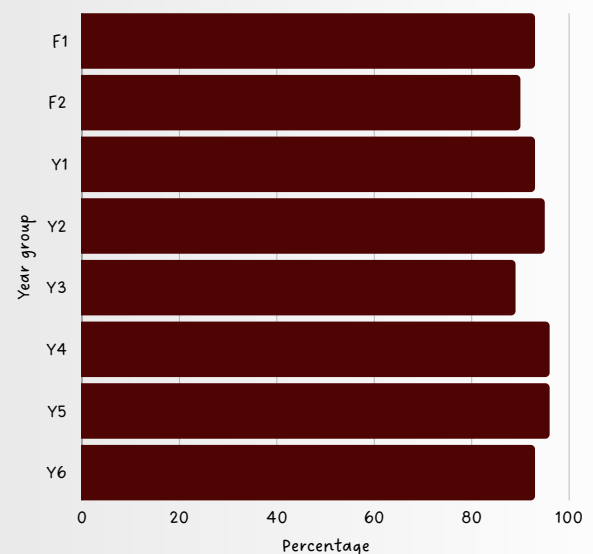
Anti-Bullying Week



Click to complete our family survey here

Weekly attendance : 94%

Target = 97%



This Week's Superstars

Play Team



Seedlings



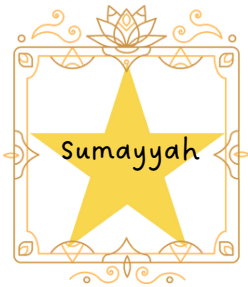
Saplings



Acorns



Willow



Maple



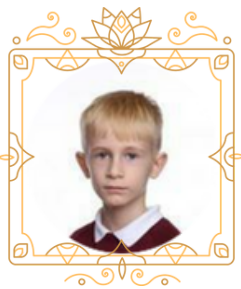
Birch



Ash



Elm



Sycamore



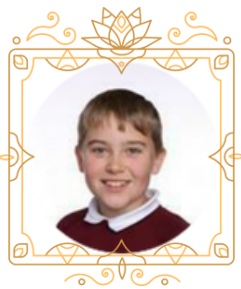
Palm



Kapok



Cedar



Banyan



Oak



Pine



Attendance Update

There will be a slight change to the weekly attendance award, handed out in Friday's Super Star assembly. From this half term, each class above 96% for that week will have the opportunity to win. One class from all above 96% will be randomly chosen to move on the Monopoly board.

For the week beginning Monday 17th November, the school will be having another late gate week similar to the previous academic year. If on time, children will complete a self-registration card with a prize for each Key Stage randomly awarded to a child who has been on time each day.

Remember: To be on time, get to school for 20 to 9.

| <u>Autumn Term 2</u> | | |
|------------------------|-------------------------------------|----------------|
| <u>Week commencing</u> | <u>End of week Attendance Award</u> | |
| 3.11.25 | Best Attendance | |
| 10.11.25 | Best Attendance | |
| 17.11.25 | Fewest Late Arrivals | Late Gate Week |
| 24.11.25 | Fewest Late Arrivals | |
| 1.12.25 | Best Attendance | |
| 8.12.25 | Fewest Late Arrivals | |
| 15.12.25 | Best Attendance | |



RECEPTION SCHOOL STARTERS!

✨ Calling all Reception September 2026 starters! ✨

We are inviting all families with a child starting school in September 2026 to join us at our Open Session:

Tuesday 11th November 4-5pm

This is a fantastic opportunity to:

- ★ Explore our wonderful reception classes
- ★ Meet our dedicated staff
- ★ Get a feel for life at King Edward Primary
- ★ Enjoy some light refreshments while you look around!

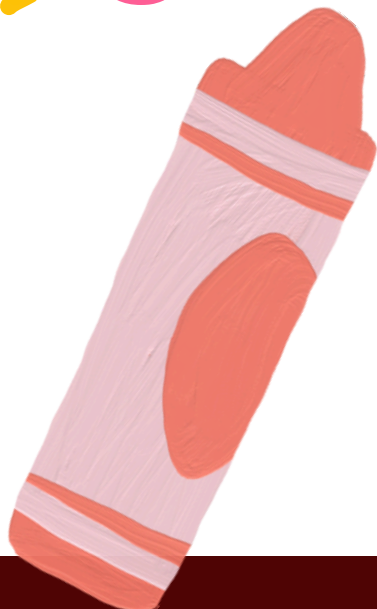
Please arrive at the school office. No need to book, just turn up!

i The deadline to apply for your child's school place is 15th January 2026. Application round opens on 3 November 2025.

Apply online via the Nottinghamshire County Council website:
<https://www.nottinghamshire.gov.uk/education/school-admissions/hub>

We look forward to welcoming you and your child to one of our sessions!

123





King Edward Primary School



Inspiring hearts,
shaping minds

NEW STARTERS 2026

SCHOOL OPEN SESSIONS

Tuesday 4th November 4-5 PM

Tuesday 11th November 4-5 PM

**PLEASE ARRIVE AT THE
SCHOOL OFFICE**

No need to book just turn up!

Musician of the month

HOME INFORMATION

November's Musician of the Month

BJÖRK



About: Guðmundsdóttir (born 21 November 1965) is an Icelandic singer, songwriter, composer, record producer, and actress. Noted for her distinct three-octave vocal range, fashion status and eccentric persona, she has developed an eclectic musical style over her four-decade career that has drawn on a range of genres.

Genres: Electronic, Pop and Experimental

Active from: 1975 - Present

Origin: Reykjavik, Iceland

Books to read...

If you like Björk, try...



- Florence and the Machine
- Wednesday Campanella
- Bat For Lashes

Help Our School Win Funding – Vote for Us at Tesco!

We're excited to let you know that our school has been selected for the Tesco Community Grants scheme, and we are in stores now! This means we have a fantastic opportunity to receive funding to support the ongoing delivery of our breakfast delivery source outside providers for a cooking group – but we need your help to make it happen!

When you shop in selected local Tesco stores, Mansfield Extra & Oaktree Extra you'll receive a blue token at the checkout. All you have to do is pop your token into the box for our school – and every vote counts!

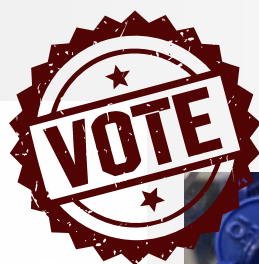
The more tokens we collect, the better chance we have of winning the top grant, which could make a real difference for our school community.

Here's how you can help:

- Shop at Tesco – every time you do, make sure to collect a blue token.
- Vote for our school – look for our name on the voting stand and drop in your token.
- Spread the word – tell family and friends to support us too!

The voting runs from now until Mid January 2026, so don't wait too long to show your support.

Thank you for helping us make our school even better – together, we can win this!



TESCO
Community Grants



2025

November

| Sunday | Monday | Tuesday | Wednesday | Thursday | Friday | Saturday |
|--------|--|--------------------------|-----------------|----------|--------|---------------------------|
| | | | | | | 1 |
| 2 | 3 BACK TO SCHOOL BOOK FAIR | 4 F2 OPEN EVENING | 5 | 6 | 7 | 8 |
| 9 | 10 <u>ANTI BULLYING WEEK</u> ODD SOCKS DAY | 11 F2 OPEN EVENING | 12 | 13 | 14 | 15 |
| 16 | 17 <u>ROAD SAFETY WEEK</u> | 18 | 19 | 20 | 21 | 22 CHRISTMAS MARKET |
| 23 | 24 | 25 | 26 PANTO DAY | 27 | 28 | 29 |
| 30 | | | | | | |

OPAL PLAY CHARTER



Own Our Actions



Play Kindly

Opal Play Charter



Accept



Leave it Tidy

Community links



Mental Health Support



Adult Learning



Home Learning



Translator

5C Focus and Tweak of the Week

5C's Focus



Inspiring hearts,
shaping minds



Courage

Tweak of the Week!



Inspiring hearts,
shaping minds



**Following instructions first
time**